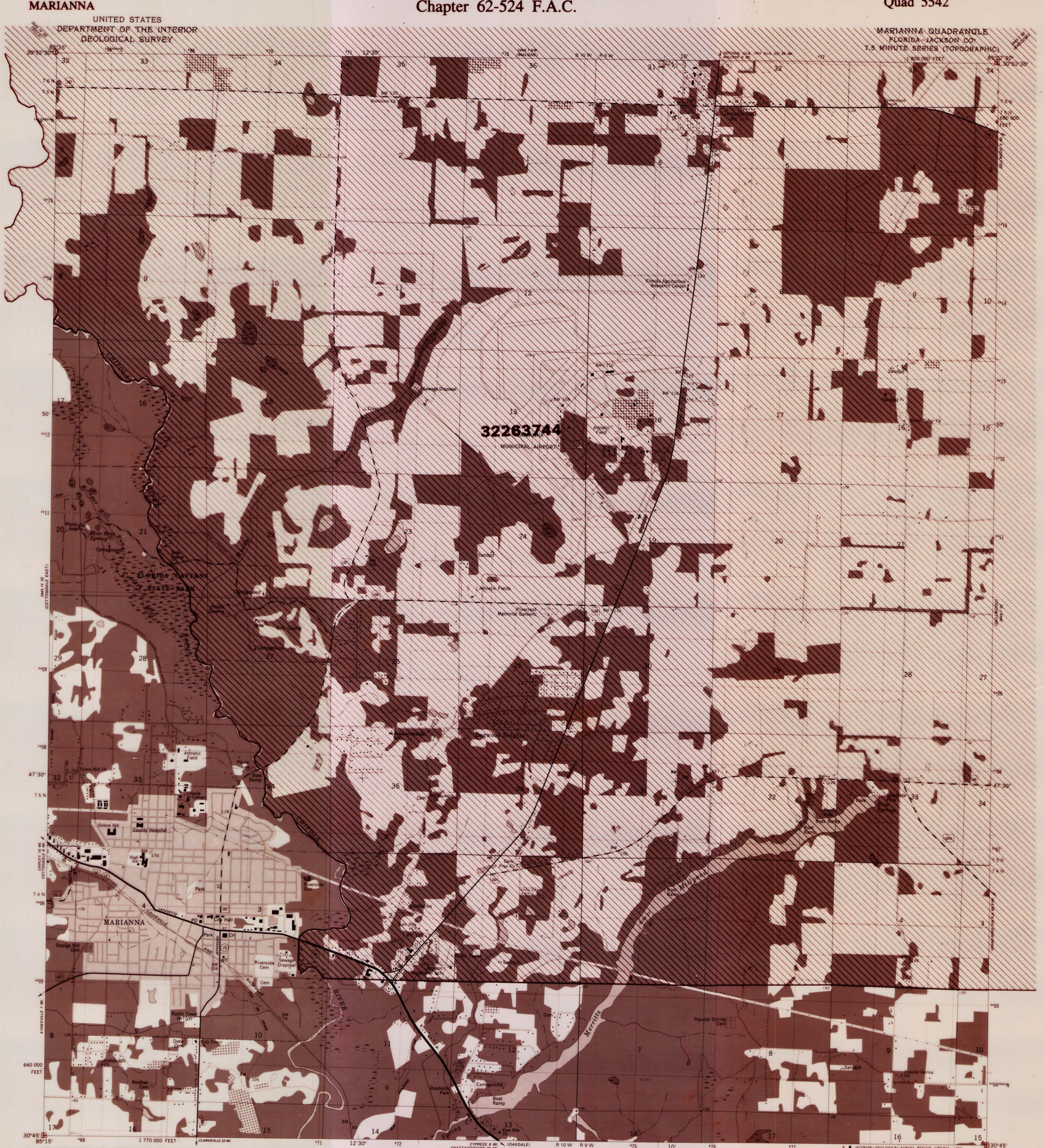


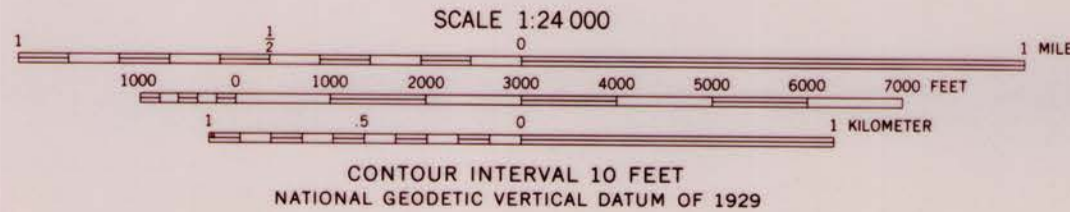
State of Florida
DEPARTMENT OF ENVIRONMENTAL PROTECTION

Delineation Map for Potable Water Well Permitting
Chapter 62-524 F.A.C.

Prepared November 1994
Quad 5542



Mapped, edited, and published by the Geological Survey
Revised in cooperation with State of Florida agencies
Control by USGS and NGS/NOAA
Culture and drainage in part compiled from aerial photographs
taken 1947. Topography by planimetric surveys 1951-52
Revised from aerial photographs taken January 1976
Field checked 1978. Map edited 1982
Polyconic projection. 10,000-foot grid ticks based
on Florida coordinate system, north zone
1000-meter Universal Transverse Mercator grid, zone 16
1927 North American Datum
To place on the predicted North American Datum 1983
move the projection lines 17 meters south and
8 meters west as shown by dashed corner ticks
Red tint indicates areas in which only landmark buildings are shown
Fine red dashed lines indicate selected fence and field lines where
generally visible on aerial photographs. This information is unchecked
There may be private inholdings within the boundaries of
the National or State reservations shown on this map



ROAD CLASSIFICATION
Primary highway, hard surface
Secondary highway, hard surface
Light-duty road, hard or improved surface
Unimproved road
Interstate Route
U. S. Route
State Route
County Route

MARIANNA, FLA.
N3045-W8507/57.5
1982
DMA 3945 I SW-SERIES V847

Explanation

The following describe the delineation areas with the contamination for which each was delineated and for which testing is required under Rule 62-524.600(1) FAC
Note: {1} Indicates solvent bonded couplings prohibited (62-524.550(2)(b))
{2} Indicates subsidized waterlines. Mandatory connection requirements may apply (62-524.300(2),(6))

32263744
Ethylene Dibromide

The delineated areas on this map represent areas where ground water contamination is known to exist as defined in chapter 62-524, F.A.C. This does not indicate that the areas which are not delineated are necessarily free from ground water contamination.

INFORMATION: For Copies of this map call:
Bureau of Information Systems (904)922-7121
For information about this map contact:
Agricultural Source and Water Well Management Section
Bureau of Drinking Water and Ground Water Resources
Division Of Water Facilities
Department of Environmental Protection
(904)488-3601
Map Prepared November 1994
Delineation Round 3